

Chain Valley and Mannering Collieries

Combined Community Consultative Committee
Meeting Presentation
17th August 2022



WELCOME AND APOLOGIES



Welcome

Apologies

Declaration of interests

Confirmation of previous minutes

AGENDA



- 1. Actions / Business Arising From Previous Minutes**
- 2. Local News and Media**
- 3. Operations**
- 4. Approvals**
- 5. Environmental Incidents / Non-compliances**
- 6. Environmental Performance**
- 7. Community Complaints**
- 8. Environmental Projects**

ACTIONS / BUSINESS ARISING FROM PREVIOUS MINUTES



Action / Business Arising	Action Owner	Update
Update on Consent Consolidation Project – Department website description includes comment on Eastern Mining Area	LM	Included in Slide 12 of this presentation

Correspondence since previous meeting

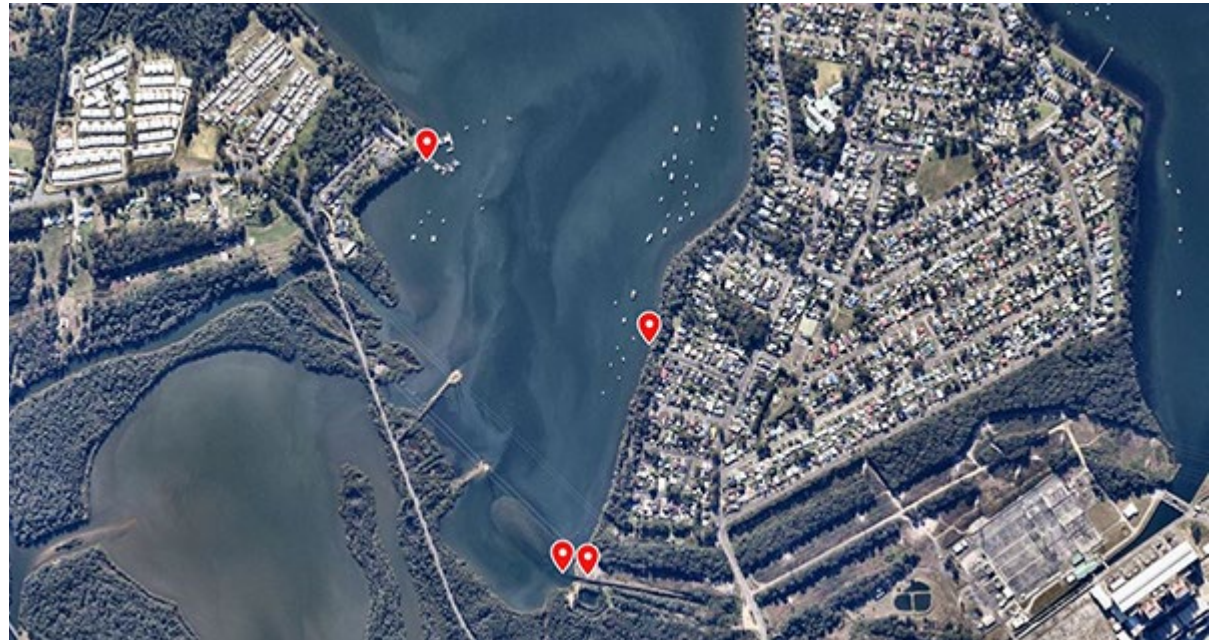
- Nil

Lake Macquarie Fish Kill

The EPA are investigating fish kill event in the Lake Macquarie.

EPA water sampling locations following fish kill event →

EPA has not identified a root cause at the time, however, dead fish appeared impacted by a depletion in dissolved oxygen (NSW EPA, 12/08/2022).



Lake Macquarie – Bubbles Filmed on Social Media

Bubbles were filmed on social media in Lake Macquarie.

Comments suggested that mine workings could be a cause.

Delta Coal has not observed increased water make which would displace air pockets underground.

A review of the video and local landforms indicate it was filmed outside of CVC Mining Leases.



OPERATIONS

Production

- All production in Fassifern seam under Lake Macquarie and Morisset Peninsula.
- First-workings only (no secondary extraction).

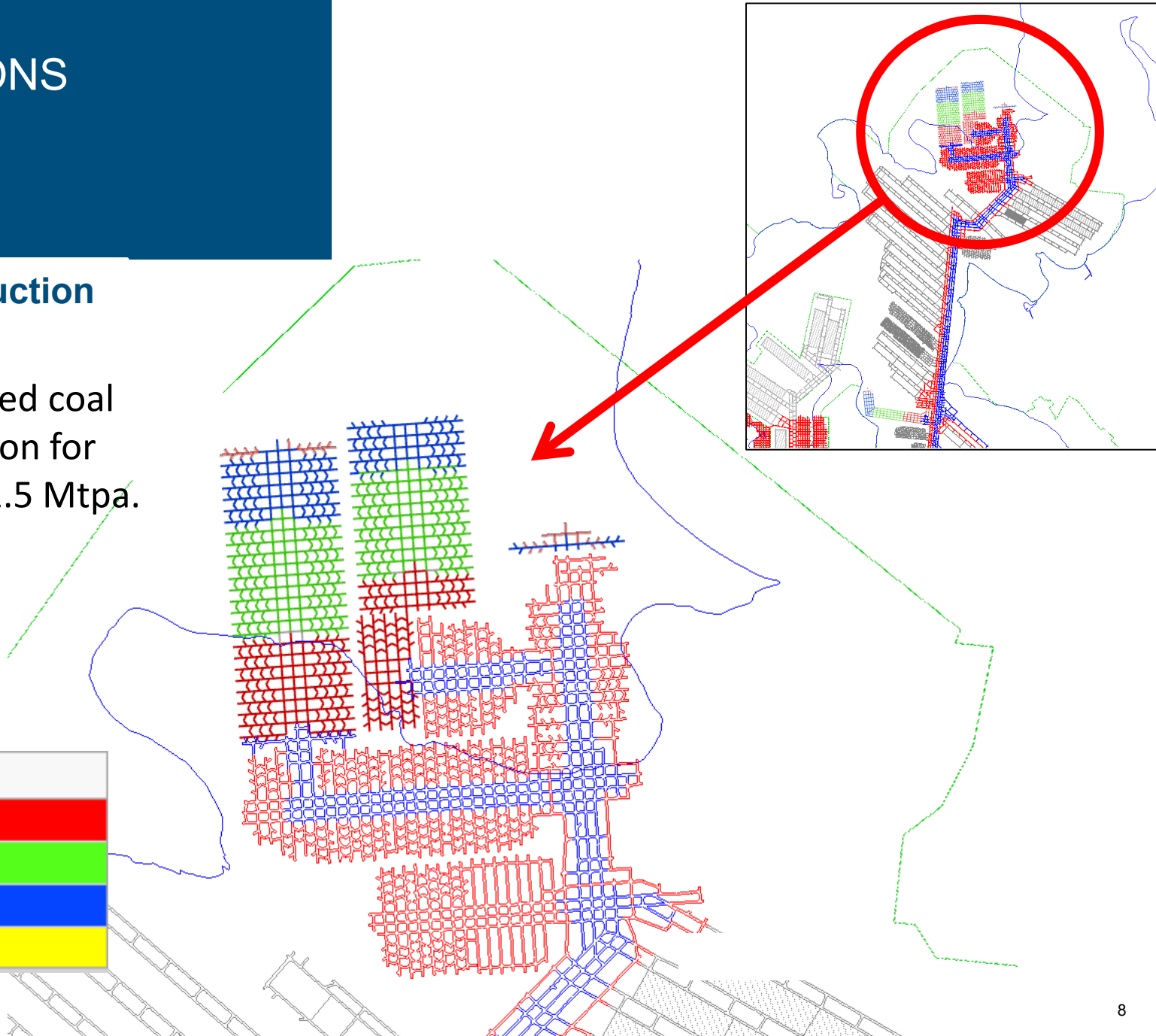


OPERATIONS

Forecast Production

- Forecasted coal production for FY23 is 1.5 Mtpa.

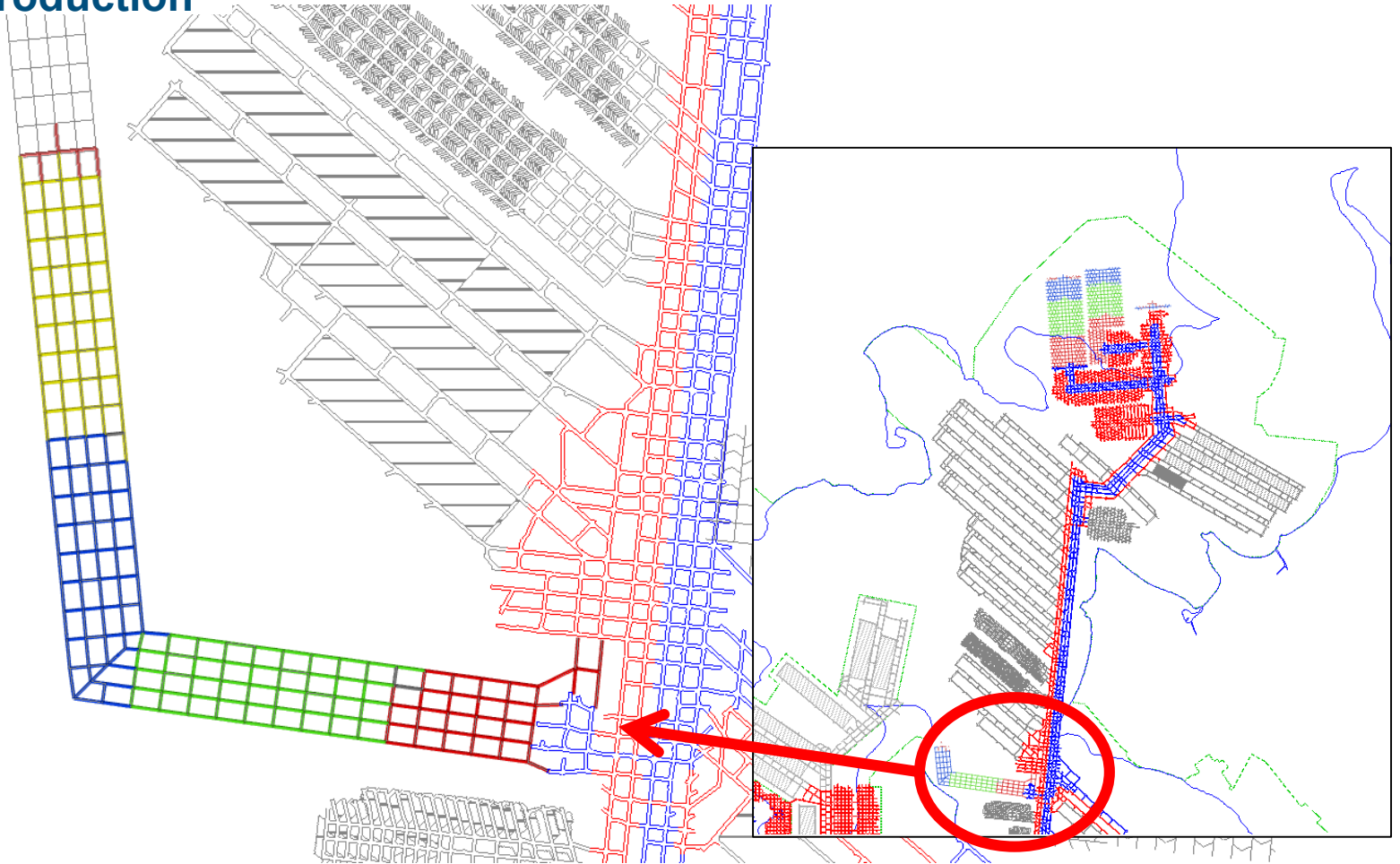
Description	Color
Q1	Red
Q2	Green
Q3	Blue
Q4	Yellow



OPERATIONS

Description	Color
Q1	Red
Q2	Green
Q3	Blue
Q4	Yellow

Forecast Production



Current Approvals

Chain Valley Colliery

- **EPL1770: Environmental Protection License - August 2022**
– Modified due dates for Pollution Response Programs
- CVC and MC MOP 2020-2023 Amendment 2 – August 2021
- CVC SSD-5465 (MOD 4): Development Consent – August 2021
- Extraction Plan: MWS5 and NPA – March 2021

Mannering Colliery

- EPL 191 – Mannering Colliery – April 2021
- Mannering Colliery Project Approval PA 06_0311 (MOD 5) – June 2020

APPROVALS

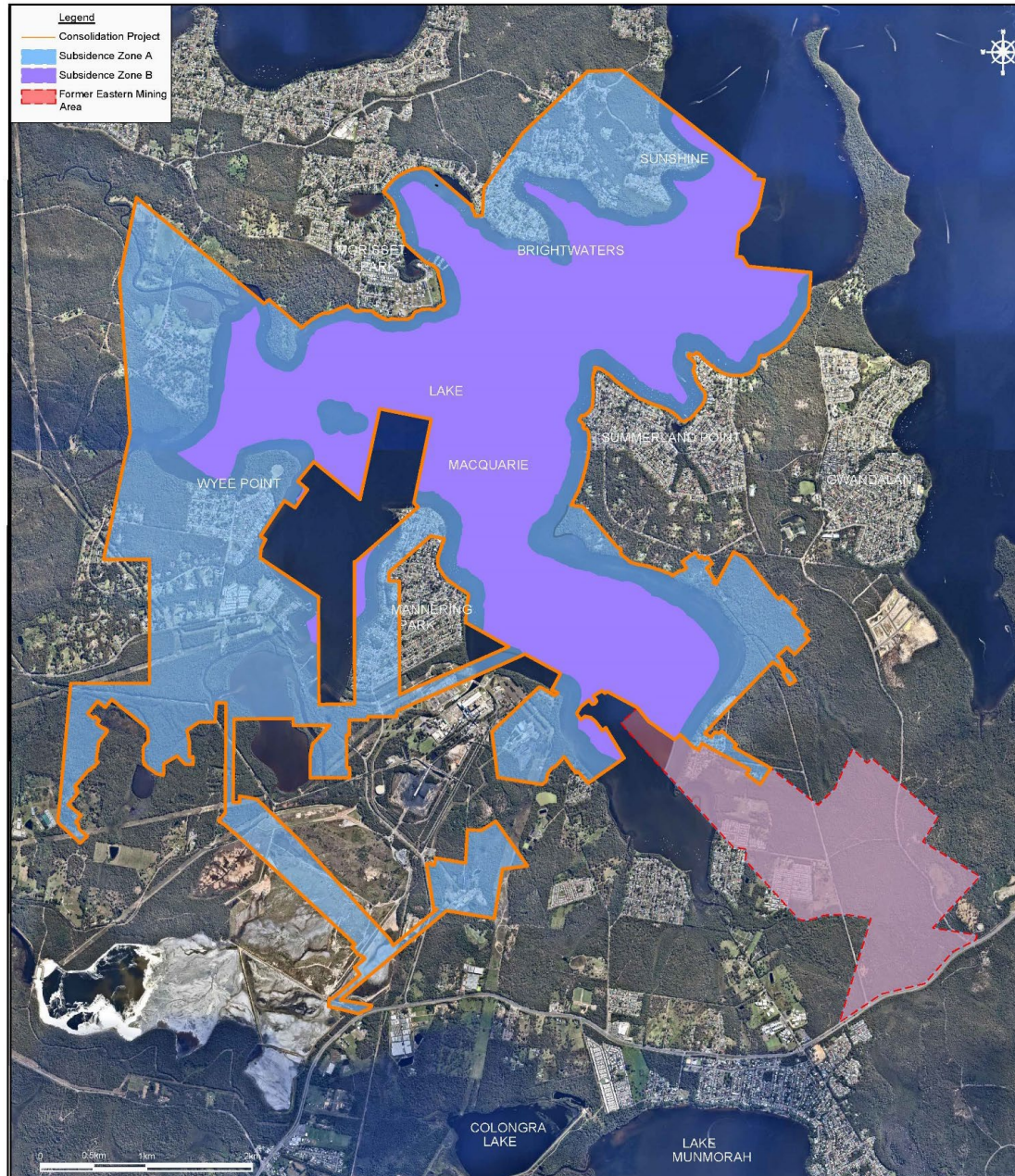
Consent Consolidation Project

Majority of technical specialist reports reviewed and finalised.

Preliminary EIS report to be reviewed by Delta Coal.

Forecast submission of the EIS to DPE is the end of August 2022 for adequacy reviews prior to being placed on exhibition.

Newsletter update on the project has been printed and provided to Australia Post for distribution.



APPROVALS



Consent Consolidation Project

Component	CVC Approved Operations	MC Approved Operations	Consolidation Project
Life of Mine (LOM)	31 December 2027	31 December 2027	31 December 2029
Annual Underground Extraction	Extraction of up to 2.1 Mtpa ROM coal	Extraction of up to 1.1 Mtpa of ROM coal	Up to 2.8 Mtpa ROM (total from all mining areas)
Annual Surface Handling	Up to 1.5 Mtpa ROM Coal	Up to 2.1 Mtpa ROM Coal	Combined handling cap of up to 2.8 Mtpa ROM coal. Up to 1.5 Mtpa from CVC and up to 2.8 at MC
Resource	Fassifern seam	Fassifern seam Great Northern seam	Fassifern seam Great Northern seam
Mining Method	First workings only under land areas. Pillar extraction and miniwall mining only under lake and subject to 20 mm subsidence limits on sea grass beds and foreshore areas	First workings only	First workings only under land areas Pillar extraction and miniwall mining limited to areas under the lake and subject to 20 mm subsidence limits on sea grass beds and foreshore areas
Underground Mining Areas	Shown on Figure 1 (includes CVC Mod 4 Application Northern Mining Area)	Shown on Figure 1	Consolidation of MC and CVC approved Mining Areas
Subsidence Commitments	<ul style="list-style-type: none"> Zone A - maximum 20mm, Zone B – maximum 780mm) seagrass and highwater mark subsidence barrier 	<ul style="list-style-type: none"> Maximum 20mm subsidence seagrass and highwater mark subsidence barrier 	<ul style="list-style-type: none"> Zone A – Maximum 20mm subsidence Zone B – Maximum 780mm subsidence

Consent Consolidation Project

Mine Infrastructure	<ul style="list-style-type: none"> • Personnel-and-material drifts, ROM coal conveyor drift to MC • Upcast and downcast ventilation shaft and fans • Coal handling facilities for breaking, crushing, sizing and storing product coal • Administration and workshop facilities • Water management infrastructure 	<ul style="list-style-type: none"> • Coal handling (breaking, crushing, sizing and storing product coal) • upcast and downcast ventilation shaft and fans • Overland conveyor (from MC Pit Top to VPPS) • Underground conveyor to CVC • Administration and workshop facilities • Water management infrastructure 	<ul style="list-style-type: none"> • Continued use of existing CVC and MC infrastructure • Coal handling infrastructure recently demolished at CVC will be replaced as required • Minor upgrades to surface facilities proposed to support extended LOM and the increase to ROM throughput (including water management structures)
Product Coal Handling and Transportation	<ul style="list-style-type: none"> • Product coal from CVC Pit Top to VPPS via truck on private roads only (up to 1.5Mtpa) • Transport product coal from approved CVC mining area to MC via the existing underground linkage up 2.1 Mtpa, for subsequent delivery to VPPS via conveyor • A maximum of 660,000 tpa of product coal from CVC Pit Top on public roads to the Port of Newcastle for export • A maximum of 180,000 tpa of product coal from CVC Pit Top on public roads to domestic customers (other than VPPS) 	<ul style="list-style-type: none"> • Up to 2.1 Mtpa ROM coal via overland conveyor to VPPS 	<ul style="list-style-type: none"> • Up to 1.5 Mtpa product coal transport from CVC to VPPS via internal haul road and sections of privately-owned Construction Road • Up to 2.8 Mtpa product coal transport from MC to VPPS via existing conveyor • maintain current approval of 660,000 tpa for export and 180,000 domestic limit

Consent Consolidation Project

Hours of Operation	24 hours per day, 7 days per week	24 hours per day, 7 days per week	No change
Workforce (Operations)	Up to approximately 330 FTE personnel at CVC and within an overall CVC/MC workforce of approximately 390	Up to approximately 330 FTE personnel at CVC and within an overall CVC/MC workforce of approximately 390	<ul style="list-style-type: none"> • No change • Approximately 390 FTE personnel across the two operations
Water Supply and Demand	<ul style="list-style-type: none"> • Licensed daily discharge of up to 12.161 ML/day (EPL) • Potable water utilised for surface facilities and underground operations supplied by Central Coast Council from potable water supply mains 	<ul style="list-style-type: none"> • Licensed daily discharge of up to 4 ML/day (EPL) • Potable water utilised for surface facilities and underground operations supplied by Central Coast Council via metered pipeline 	<ul style="list-style-type: none"> • No change to current water discharge requirements • Potable water utilised for surface facilities and underground operations supplied by Central Coast Council

ENVIRONMENTAL INCIDENTS / NON- COMPLIANCES



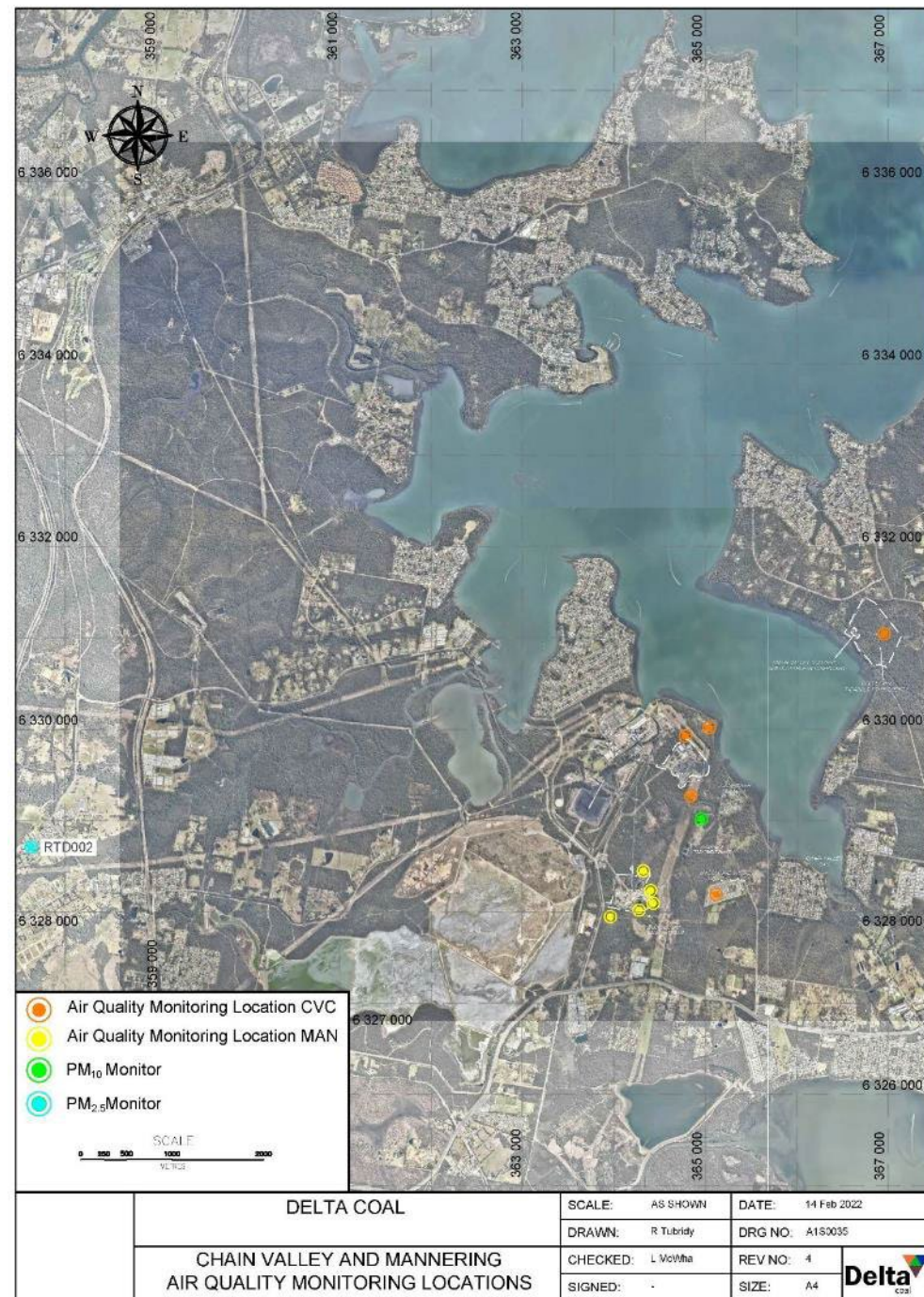
Summary of Incidents and Non-compliances

Site	Date	Incident / Non-compliance Type
CVC & MC	8 th June 2022	PM _{2.5} unit vandalised
CVC	5 th July 2022	Faecal Coliform, Total Suspended Solids and Volumetric Discharge Exceedance
MC	5 th July 2022	Volumetric Discharge Exceedance
CVC	6 th July 2022	Volumetric Discharge Exceedance
MC	7 th July 2022	Total Suspended Solids Exceedance
CVC	8 th July 2022	Missed bathymetric scanning commitment for March 2022.

ENVIRONMENTAL INCIDENTS / NON-COMPLIANCES

PM_{2.5} Monitoring Unit Vandalism

- Details:
 - PM_{2.5} monitor at Wye was vandalised on 8th June and data was inaccurate for period of 8 to 30 June 2022.
- Actions:
 - Impacted monitoring data substituted with annual average value.
 - The incident was reported to the NSW DPE, NSW EPA and Resources Regulator.
 - Unit was replaced



ENVIRONMENTAL INCIDENTS / NON-COMPLIANCES

Faecal Coliform, Total Suspended Solids and Volumetric Exceedance at CVC Spillway (Point 27)

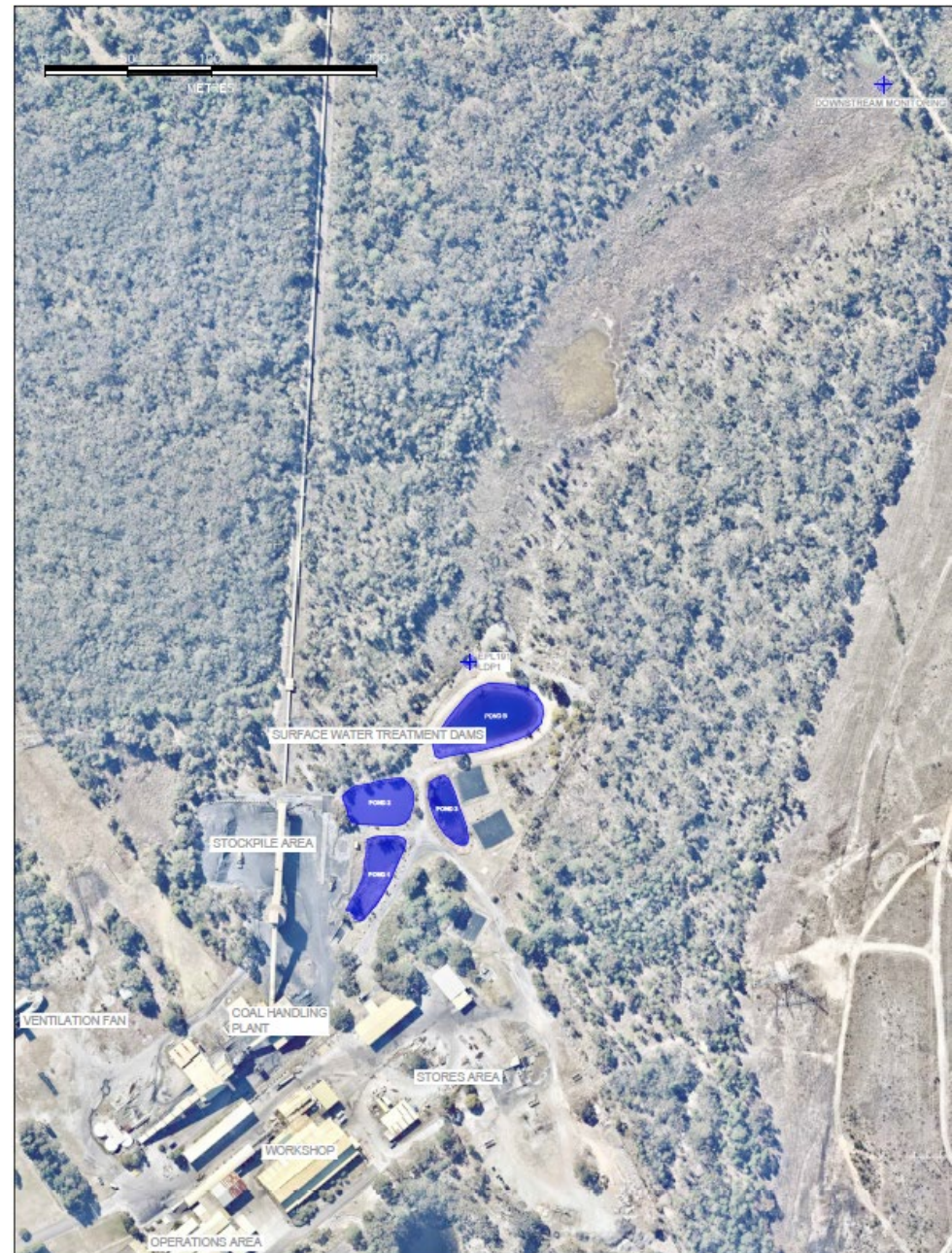
- Details:
 - High Rainfall 2-6 July 2022
 - Total discharge of 15,370 kL
 - FC = 360 CFU/100ml
 - TSS = 52 mg/L
- Actions:
 - Review site water balance and water management TARP
 - Review and maintain clean water diversion systems
 - Connection of CVC sewer and continued chlorine dosing of effluent.



ENVIRONMENTAL INCIDENTS / NON-COMPLIANCES

Exceedance of Volumetric Discharge and TSS at Mannering Colliery Discharge (Point 1)

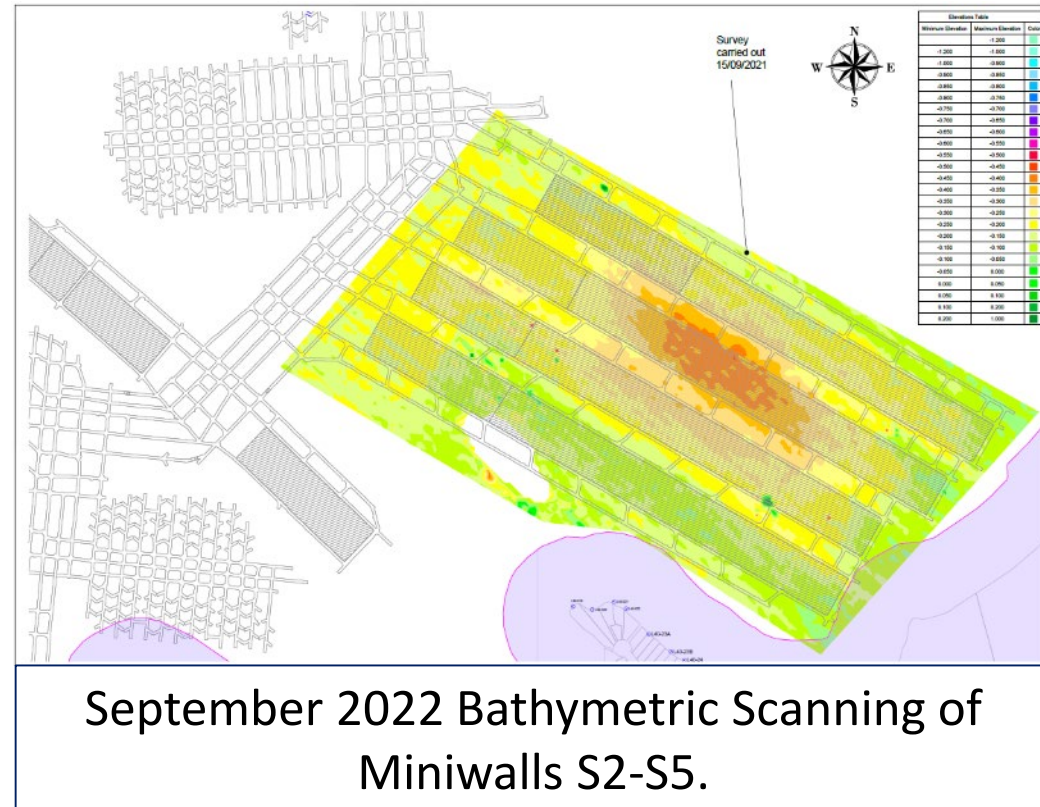
- Details:
 - High Rainfall 2-6 July 2 runoff
 - Total discharge of 4,249 (5 July 2022)
 - TSS = 166 mg/L (7 July 2022)
- Actions:
 - Review MC site water balance and water management TARP.
 - Review and maintain clean water diversion systems.
 - Investigate improvements in the Mannering Colliery flocculant system.



ENVIRONMENTAL INCIDENTS / NON- COMPLIANCES

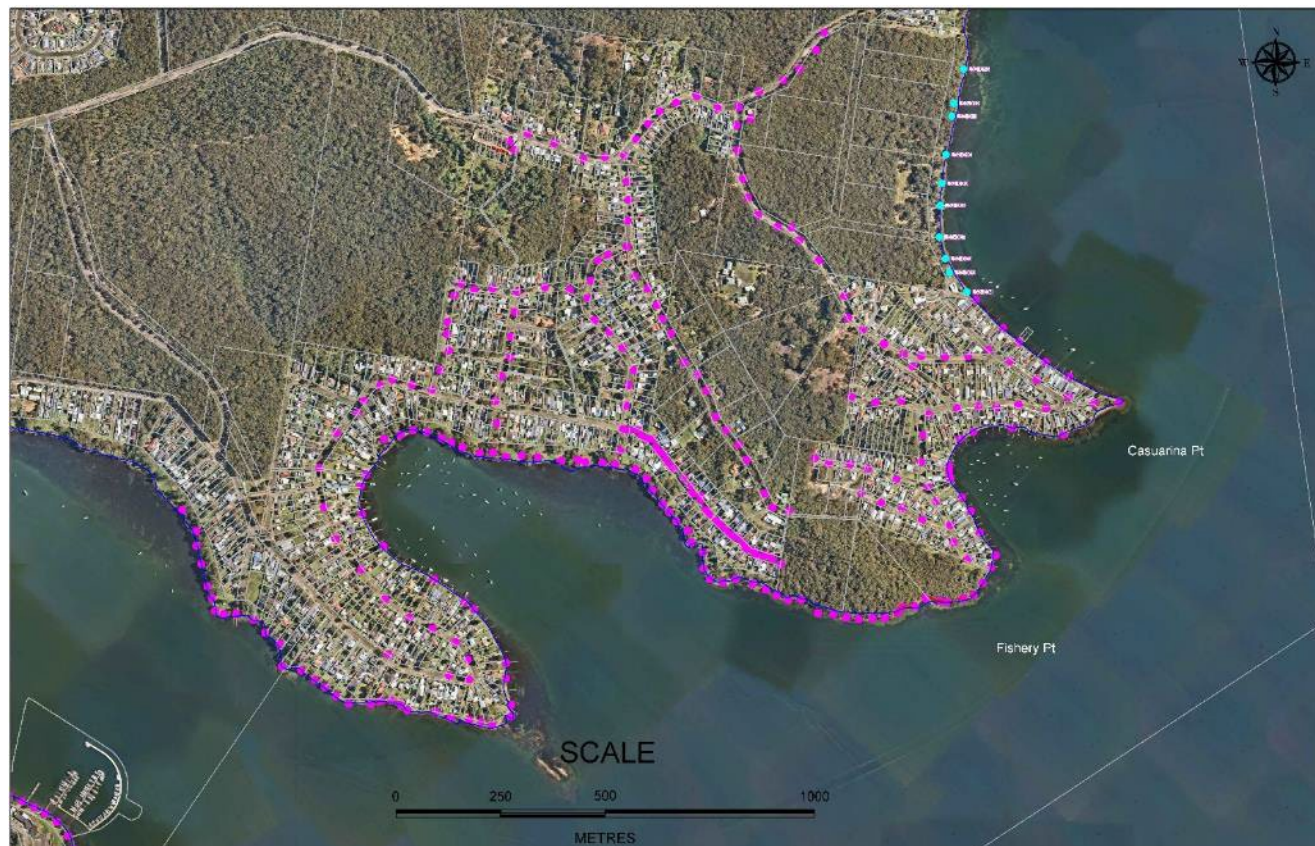
Missed Bathymetric Scanning Commitment for Former Secondary Extraction Workings

- Details:
 - Separate commitments between Resources Regulator and DPE
 - Noted no secondary extraction has occurred since previous scan in September 2021.
- Actions:
 - Next scan scheduled for September 2022.
 - 6-monthly scan to be included in compliance data base currently under review.



Subsidence Monitoring

- Bathymetric scan of prior secondary workings scheduled for September 2022.
- Subsidence monitoring of the Morisset Peninsula has confirmed nil impact from sub-surface first workings.



Seagrass Monitoring

Delta Coal undertook a Seagrass Survey in June 2022 as an annual requirement.

Results of the monitoring indicated:

- Seagrass cover has increased in the study area since the commencement of monitoring in 2008 being relatively consistent since 2012.
- Seagrass cover along the transects ranged from 79% to 100% in June 2022 monitoring.



Zostera capricorni is the dominant seagrass in monitoring transects - approximately 95% of cover.

ENVIRONMENTAL PERFORMANCE

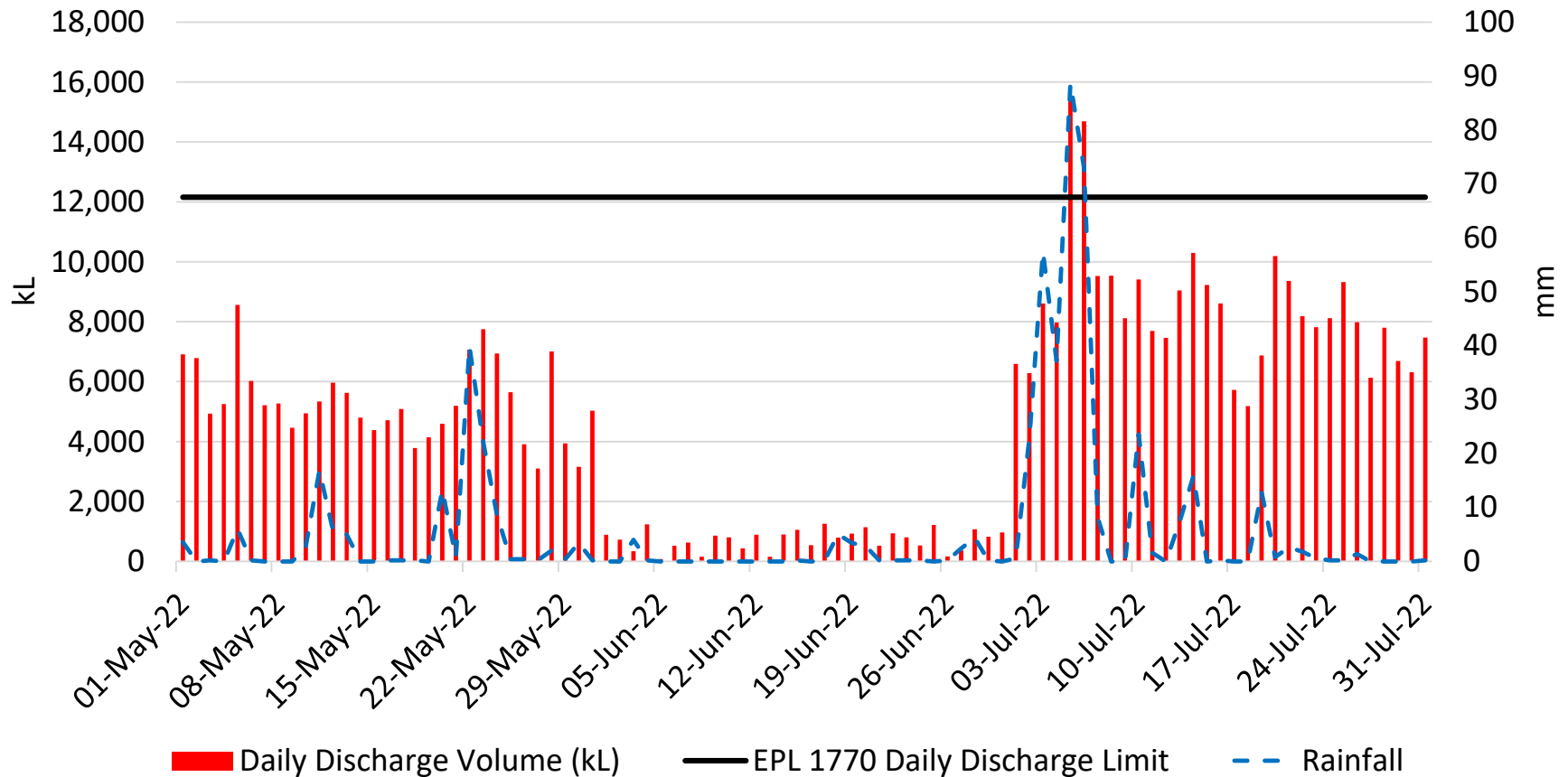
Seagrass Monitoring Locations

Transects range from 15 to 90m long.



CVC Surface Water Daily Discharge and Rainfall Volumes

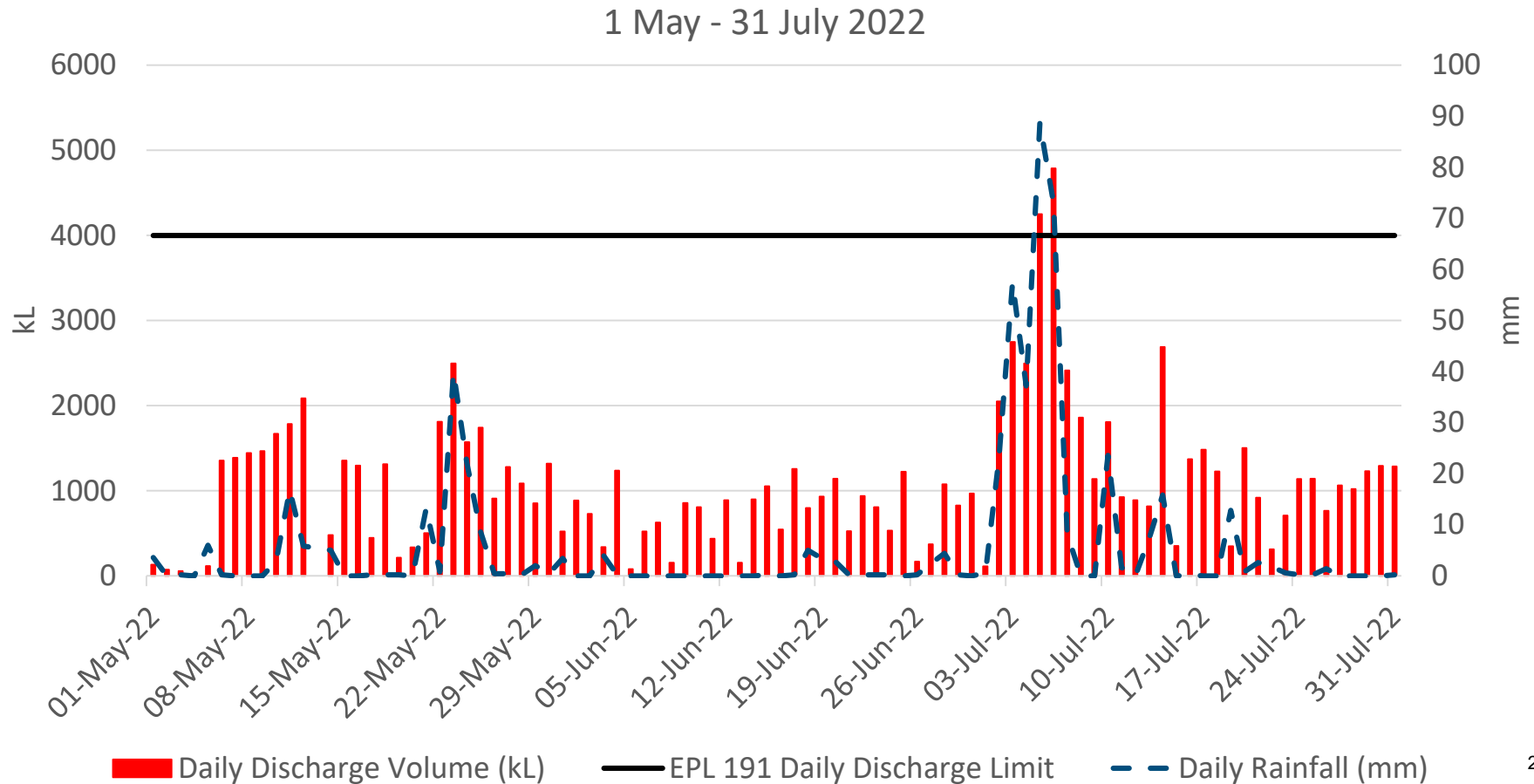
1 May - 31 July 2022



CVC Surface Water Quality Monitoring

LDP1	Limits	May-2022	Jun-2022	Jul- 2022
Faecal Coliforms (CFU/100ml)	200	2	18	56
Total Suspended Solids (mg/kg)	50	<5	15	12
pH (pH Units)	6.5-8.5	7.57	7.52	7.53
Oil and Grease	10	<5	6	<5

MC Surface Water Daily Discharge Volume and Rainfall Volumes



ENVIRONMENTAL PERFORMANCE

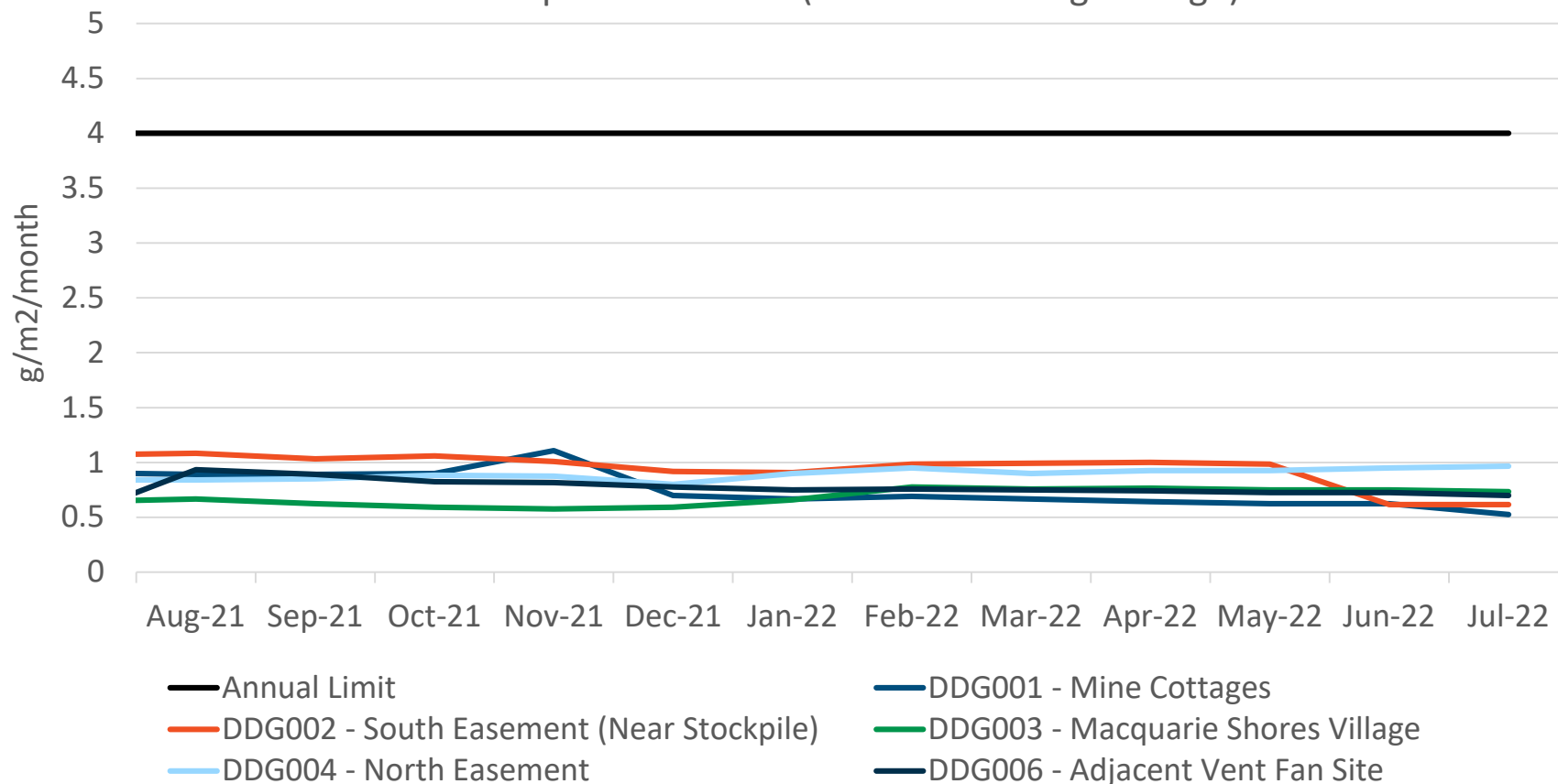


MC Surface Water Quality Monitoring

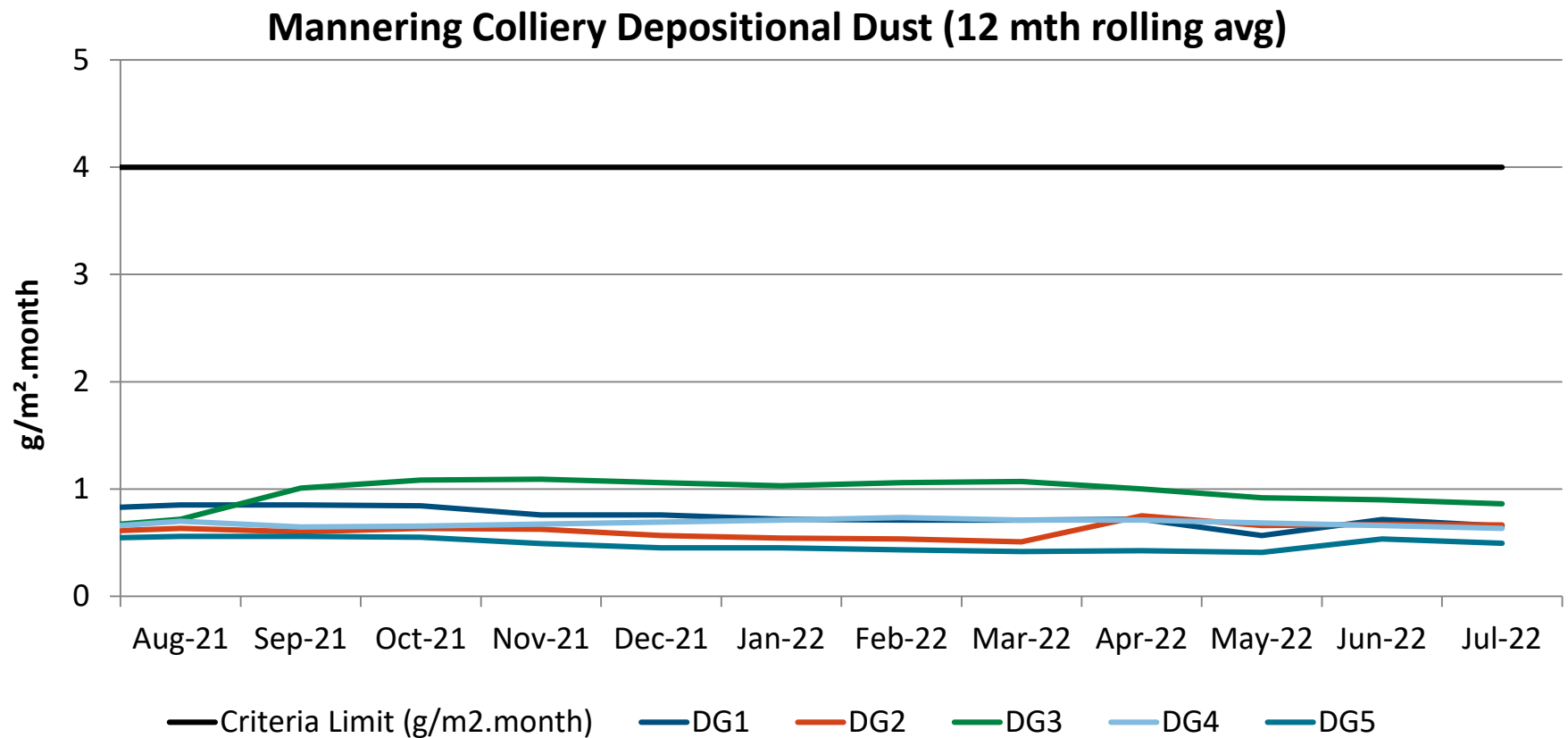
LDP1	Limits	May-2022 Average	Jun-2022 Average	Jul- 2022 Average
Oil & Grease mg/L	10	<5	<5	<5
TSS mg/L	50	9.6	<5	47.5
pH	6.5-8.5	7.94	7.97	7.90

CVC Depositional Dust Monitoring

CVC Depositional Dust (12 month rolling average)

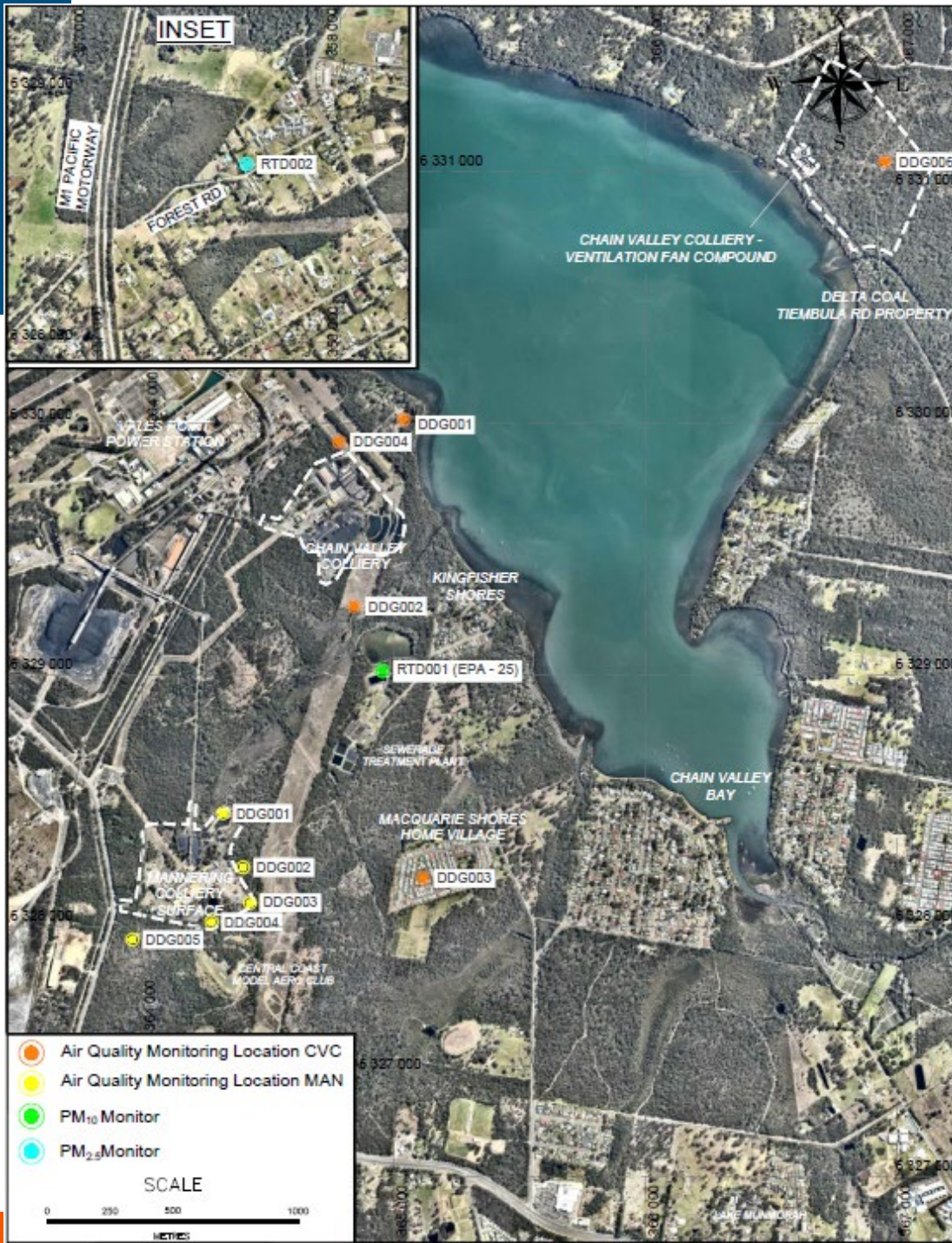


MC Depositional Dust Monitoring



ENVIRONMENTAL PERFORMANCE

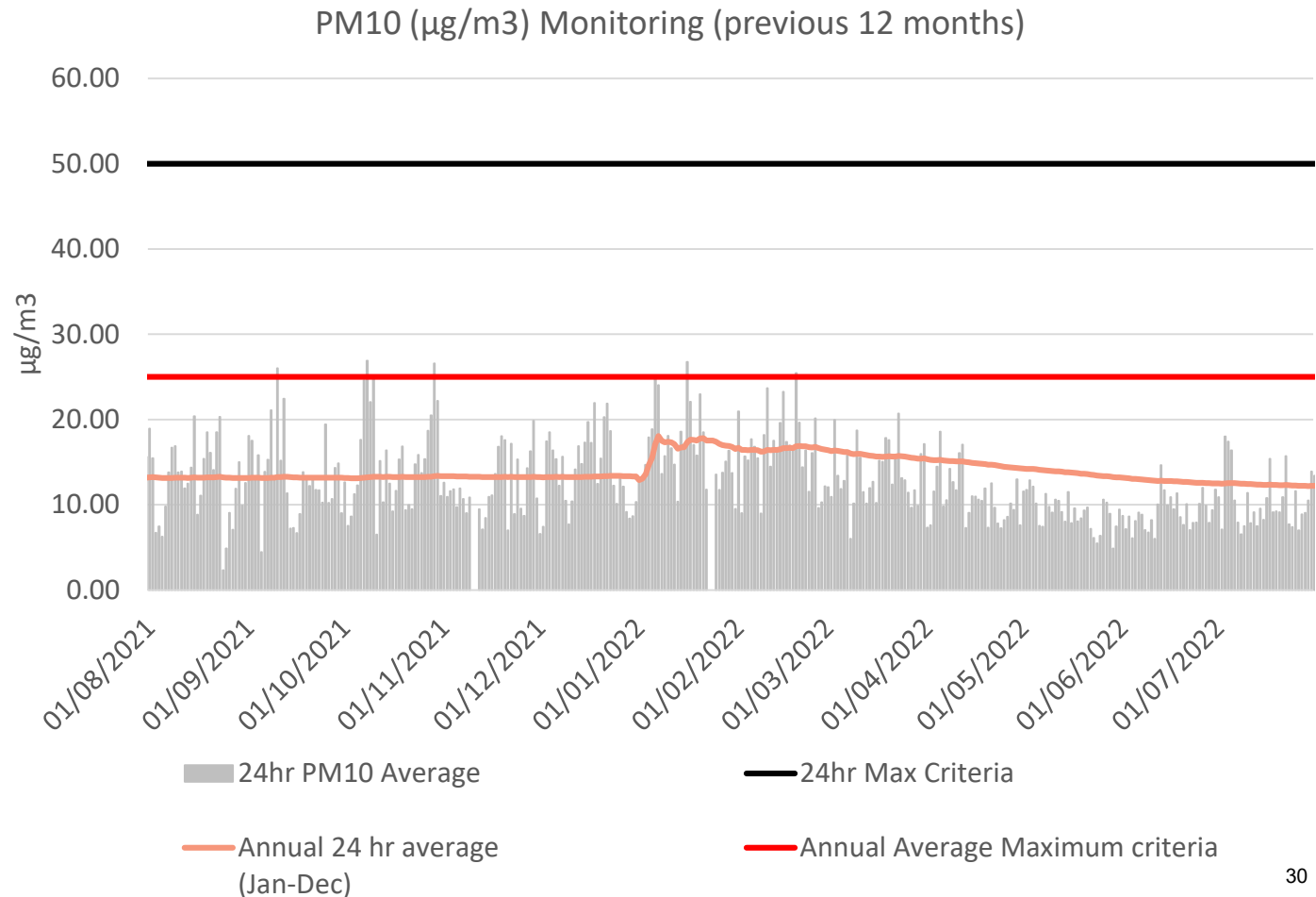
Delta Coal Air Quality Monitoring Locations



PM₁₀ Monitoring

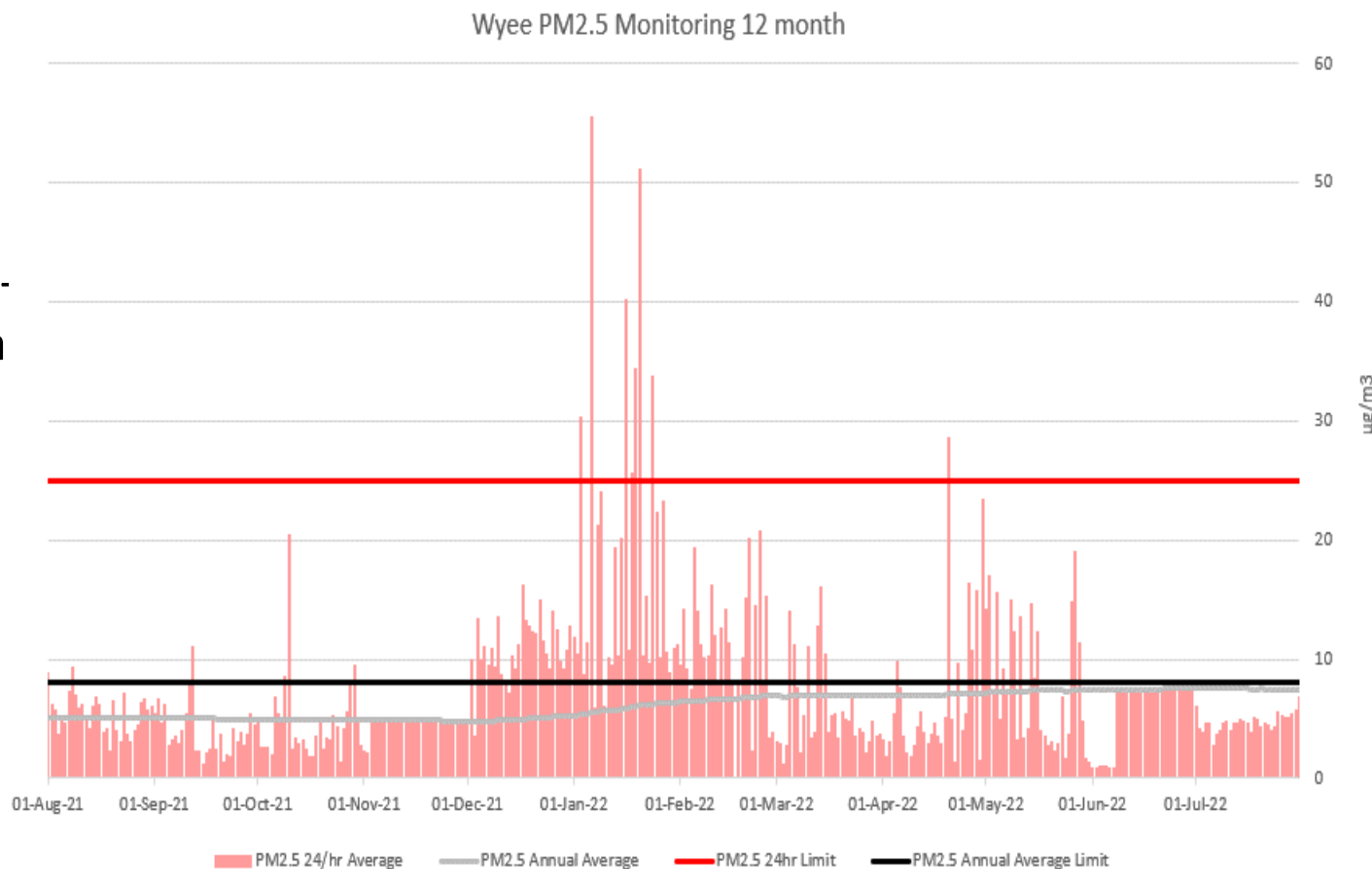
No exceedances of the average annual or 24hr criteria have been observed within the last 12 months.

Note: annual average resets at calendar year.



PM_{2.5} Monitoring

Annual average data was substituted for non-representative data for the period 8 to 30 June 2022.

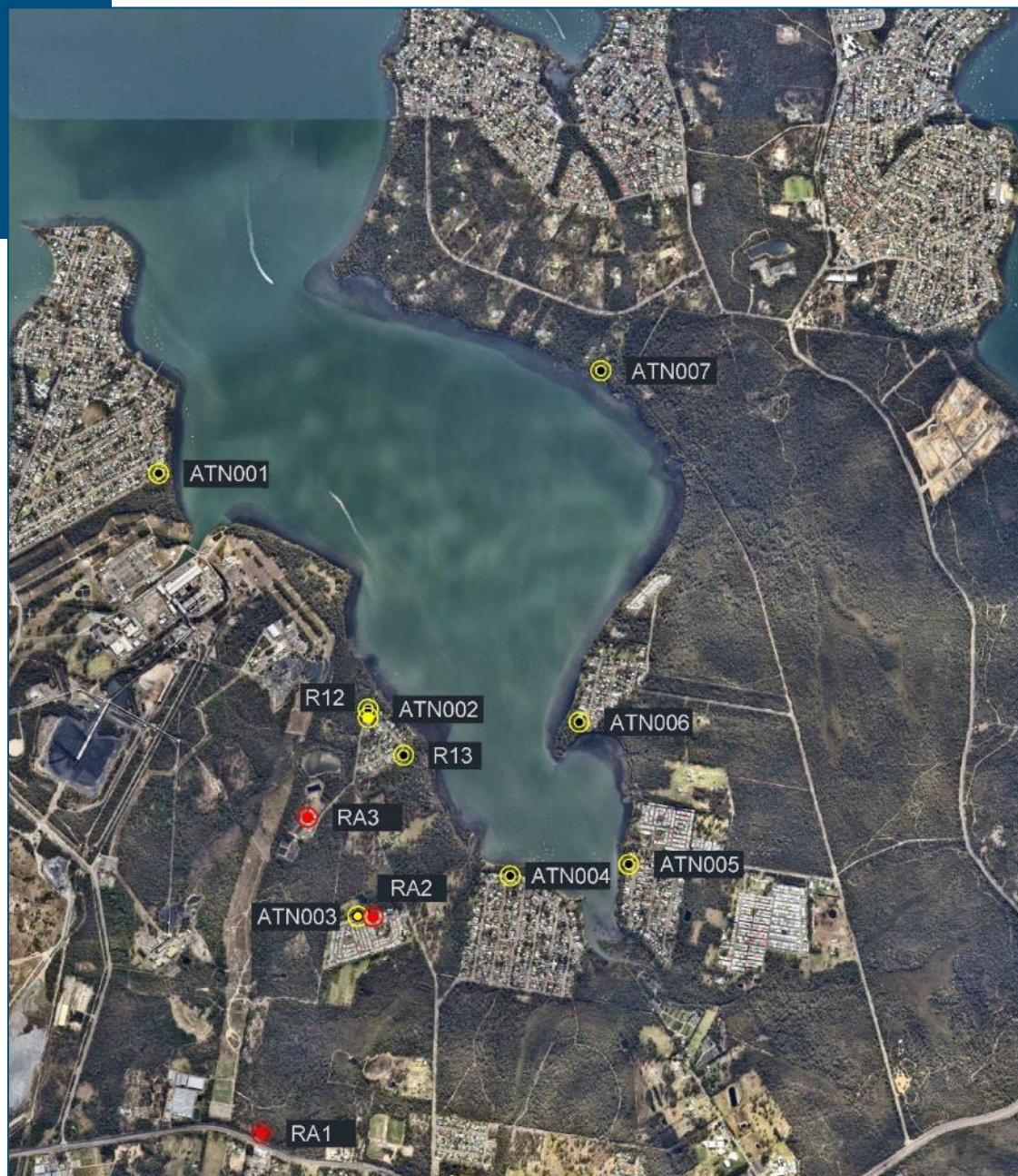


ENVIRONMENTAL PERFORMANCE

Noise Monitoring

Red = MC
Monitoring
Location

Yellow = CVC
Monitoring
Location



ENVIRONMENTAL PERFORMANCE



Noise Monitoring – MC May - July 2022

There were no noise exceedances at MC for the reporting period (1 May 2022 to 31 July 2022)

IA = Inaudible

Location	Date	Site Contributions, dB		Noise Limits, dB		Compliance status
		LAEQ	LAMAX	LAEQ	LAMAX	
May 2022						
RA1	17/05/2022	IA	IA	36	46	☑
RA2		<39	<45	40	45	☑
RA3		<39	<49	39	49	☑
June 2022						
RA1	20/06/2022	IA	IA	36	46	☑
RA2		39	44	40	45	☑
RA3		IA	IA	39	49	☑
July 2022						
RA1	25/07/2022	IA	IA	36	46	☑
RA2		<35	N/A	40	45	☑
RA3		IA	IA	39	49	☑

Noise Monitoring – CVC Q2 2022

Chain Valley Colliery Q2 noise monitoring was undertaken on the 20th and 22nd of June 2022.

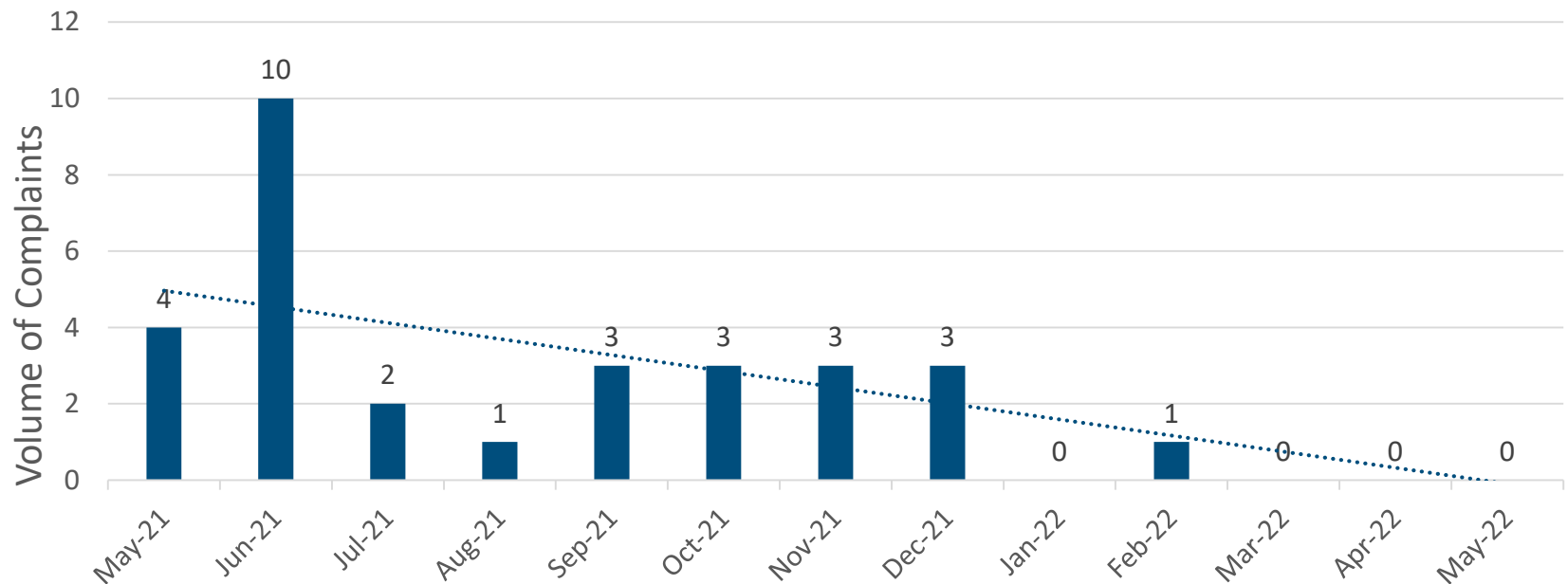
In Q2 2022, Chain Valley Colliery was inaudible at all monitoring locations, with exception to ATN007 (ventilation fan site). The maximum recorded result for each location is presented adjacent.

Monitoring Point	Site Contributions, dB		Noise Limit		Compliance Status
	LA _{EQ} (15 min)	LAMAX	LA _{EQ} (15 min)	LAMAX	
Chain Valley Colliery Q1 2022 (14, 15 and 18 March 2022)					
ATN001	In-audible (IA)	IA	38	45	☑
ATN002	IA	IA	49	54	☑
ATN003	IA	IA	36	45	☑
ATN004	IA	IA	35	45	☑
ATN005	IA	IA	35	45	☑
ATN006	IA	IA	37	45	☑
ATN007	44 (42+2 LFN)	42	46	46	☑
R12	IA	IA	49	53	☑
R13	IA	IA	43	49	☑

Community Complaints between 1 May and 31 July 2022:

- Chain Valley Colliery - Nil community complaints received in period.
- Mannering Colliery - Nil community complaints received in period.

Mannering Colliery Complaints (noise)



Environmental Site Works

- In June 2022 Delta Coal appointed two full time environmental groundsmen.
- Their purpose is to conduct environmental maintenance, cleaning and preventative task
- Currently the groundsmen are focused on workshop and hardstand tidy-up and recycling. They have commenced assisting in site waste management.
- Future works will include
 - improved waste management system and recycling,
 - maintenance of pollution control devices,
 - weed management, and
 - General grounds maintenance

QUESTIONS

Next Meeting: 16th November 2022 at 2:00pm